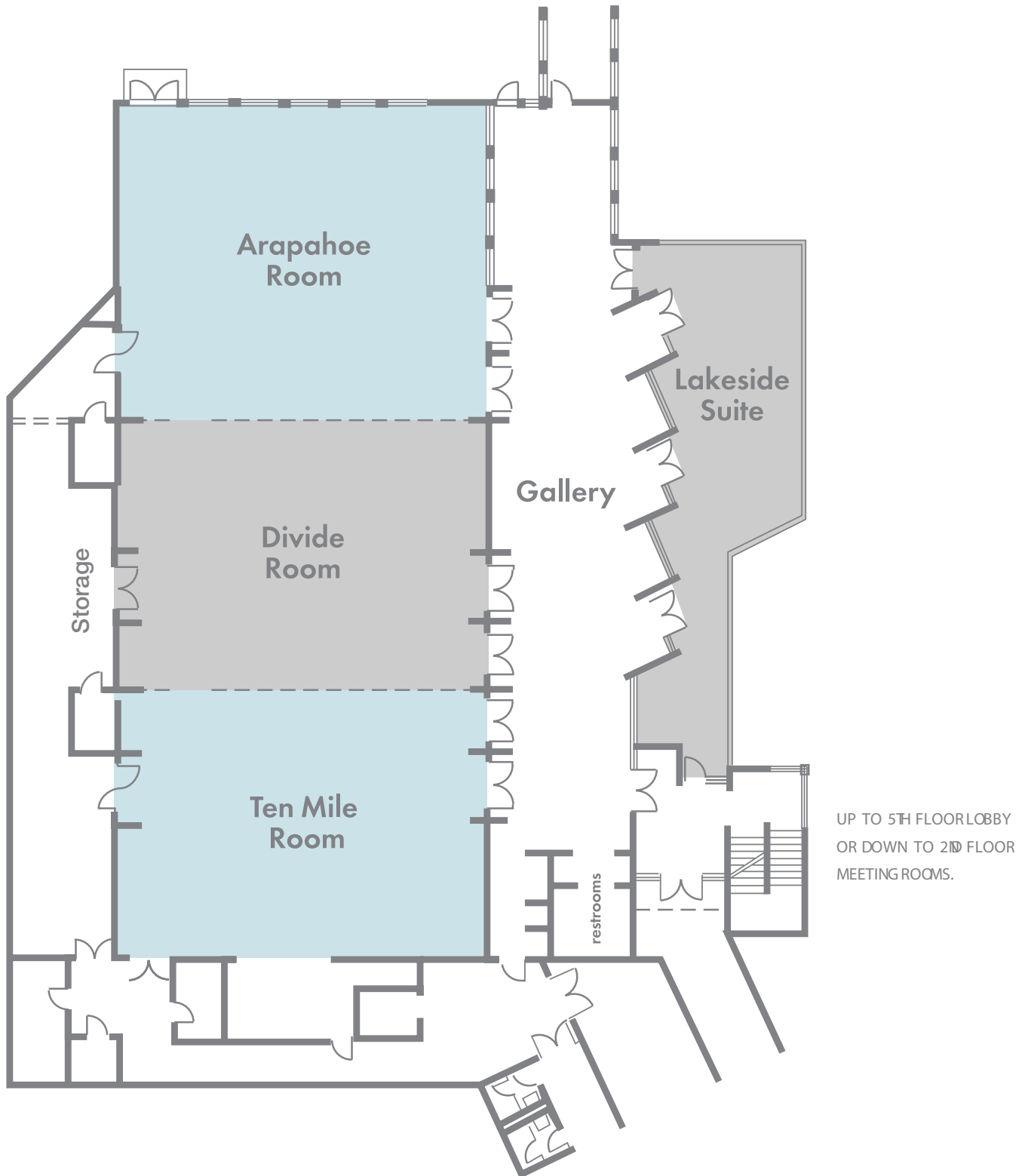


# CONFERENCE ROOMS

## KEYSTONE LODGE & SPA BALLROOM (THIRD FLOOR)



# CONFERENCE ROOMS

|                               | SQUARE<br>FOOTAGE | DIMENSIONS<br>LXWXH (FEET) | THEATER | SCHOOL<br>ROOM | CONFERENCE | HOLLOW<br>SQUARE | U-SHAPE | RECEPTION | DINING<br>ROUNDS OF<br>12 PEOPLE |
|-------------------------------|-------------------|----------------------------|---------|----------------|------------|------------------|---------|-----------|----------------------------------|
| KEYSTONE LODGE & SPA BALLROOM | 5,700             | 114X50X13-15.4             | 578     | 324            | X          | X                | X       | 630       | 480                              |
| ARAPAHOE ROOM                 | 2,100             | 50X42X15.4                 | 240     | 120            | 30         | 64               | 48      | 250       | 168                              |
| DIVIDE ROOM                   | 1,800             | 50X36X13                   | 180     | 96             | 30         | 58               | 42      | 190       | 144                              |
| TEN MILE ROOM                 | 1,800             | 50X36X13                   | 180     | 96             | 30         | 58               | 42      | 190       | 144                              |
| GALLERY                       | 1,700             | 100X12X12                  | X       | X              | X          | X                | X       | 130       | X                                |
| LAKESIDE SUITE                | 630               | 39X16X12                   | 40      | 25             | 20         | 20               | 20      | 75        | 48                               |
| MOUNTAIN VIEW TERRACE         | 2,000             | 50X40                      | 75      | X              | X          | X                | X       | 95        | 95                               |
| GAZEBO                        | 2,116             | 93X23                      | 200     | X              | X          | X                | X       | X         | 168                              |
| LODGE TERRACE DECK            | 5,015             | 85X89                      | X       | X              | X          | X                | X       | X         | 336                              |



WELCOME

LOCATION

ACTIVITIES

DINING

LODGING

CONFERENCE TOOLS

ENVIRONMENT

# CONFERENCE ROOMS

## KEYSTONE LODGE & SPA MEETING ROOMS (SECOND FLOOR)



# CONFERENCE ROOMS

|             | SQUARE<br>FOOTAGE | DIMENSIONS<br>LXWXH (FEET) | THEATER | SCHOOL<br>ROOM | CONFERENCE | HOLLOW<br>SQUARE | U-SHAPE | RECEPTION | DINING<br>ROUNDS OF<br>12 PEOPLE |
|-------------|-------------------|----------------------------|---------|----------------|------------|------------------|---------|-----------|----------------------------------|
| GOLDS       | 580               | 34X17X8.5                  | 30      | 16             | 16         | 16               | 12      | 40        | 36                               |
| GOLD I      | 290               | 17X17X8.5                  | 12      | 8              | 8          | 8                | 6       | 20        | 12                               |
| GOLD II     | 290               | 17X17X8.5                  | 12      | 8              | 8          | 8                | 6       | 20        | 12                               |
| SILVERS     | 920               | 40X23X8.5                  | 90      | 48             | 30         | 40               | 32      | 95        | 60                               |
| SILVER I    | 460               | 20X23X8.5                  | 40      | 24             | 16         | 16               | 12      | 45        | 24                               |
| SILVER II   | 460               | 20X23X8.5                  | 40      | 24             | 16         | 16               | 12      | 45        | 24                               |
| SUNS        | 920               | 40X23X8.5                  | 90      | 48             | 30         | 40               | 32      | 95        | 60                               |
| SUN I       | 460               | 20X23X8.5                  | 40      | 24             | 16         | 16               | 12      | 45        | 24                               |
| SUN II      | 460               | 20X23X8.5                  | 40      | 24             | 16         | 16               | 12      | 45        | 24                               |
| QUICKSILVER | 300               | 15X20X8.5                  | 15      | 10             | 10         | 10               | 8       | 20        | 12                               |
| STARSLIDE   | 440               | 27X17X8.5                  | X       | 24             | 12         | X                | X       | X         | X                                |
| WINDWOOD    | 600               | 27X23X8.5                  | 50      | 24             | 30         | 24               | 20      | 60        | 36                               |
| FOXFIRE     | 600               | 27X23X8.5                  | 50      | 20             | 30         | 24               | 20      | 60        | 36                               |



WELCOME

LOCATION

ACTIVITIES

DINING

LODGING

CONFERENCE TOOLS

ENVIRONMENT